

CARTRIDGE HEATER HB SPLIT



Description

This high performance cartridge heater is designed to meet all needs of heating and dimensions.

This heater eliminates the need of small tolerances of the hole diameter as well as an individual adaptation, since it expands to fill the drill hole when power is put on.

The recommended drill hole diameter is 0.18 mm larger than the nominal diameter of the cartridge heater shown below.



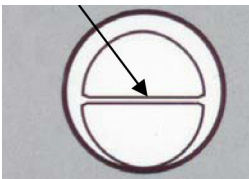
Measurements

Diameter	Nominal diam. (1)	Standard cold zone	Min-max length (2)
8.0 mm	7.875 mm	8.000 mm	38-660 mm
10.0 mm	9.875 mm	9.500 mm	38-915 mm
12.0 mm	11.875 mm	15.875 mm	50-1140 mm
12.5 mm	12.375 mm	15.875 mm	50-1140 mm
15.0 mm	14.875 mm	15.875 mm	65-1250 mm
16.0 mm	15.875 mm	15.875 mm	65-1525 mm
20.0 mm	19.875 mm	15.875 mm	100-1825 mm
25.0 mm	24.870 mm	24.500 mm	200-1525 mm

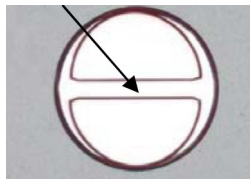
(1) Tolerance: ± 0.05 mm 8-20 mm

(2) Tolerance $\pm 3\%$ under 500 mm, $\pm 2\%$ over 500mm

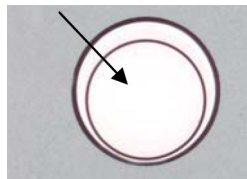
Before power is put on



After power is put on



Trad. cartridge heater



Tubular heating elements

BENEFITS

- Easy to mount and dismount
- Lower demands of tolerance on the hole diam.
- Can replace trad. cartridge heater in cases when the drill hole is too big

APPLICATIONS

- Tool heating
- Plastic industry
- Packaging industry
- Flight industry

